

# TRAMSPREAD

DIGESTATE AND SLURRY MANAGEMENT



**APPLYING EXPERTISE WITH EVERY CUBE**

# Welcome to Tramspread



**TRAMSPREAD** was established in 1988 and is based in Suffolk, England, where it has built a reputation as a market leader in slurry handling technology. The company took its name from the patented 'TRAMSPREAD', a twin-outlet slurry tanker attachment for spreading in tramlines to a width of 12m which was invented by company founder Terry Baker.

Priding ourselves on exceptional build quality and engineering excellence, we now manufacture a comprehensive range of slurry-handling equipment, including umbilical and tanker applicators, hose reelers and pump units. All are thoroughly tried and tested by our own contracting operation, Tramspread Contracting Ltd, which accurately applies hundreds of thousands of cubic metres of slurry and digestate each year throughout East Anglia and beyond.

The company's pioneering products have always been at the forefront of precision technology. Now more than ever, maximising the nutrient value in slurry and digestate via correct and accurate application offers a valuable opportunity, both as a resource for cost-effective crop nutrition, reducing reliance on costly bought-in fertiliser, and from an environmental perspective by reducing the carbon footprint of a farming business.

Tramspread is the sole UK importer for a variety of premium-quality brands including Reck (slurry mixers), Stallkamp (separators and mixers), Hexa-Cover (floating cover) and Albers Alligator (liquid storage systems). We are also dealers for the Bauer, Roelama, and Vogelsang ranges of equipment; Gollmer & Hummel and Mandals hose; Metal 360 couplings; and Agri-Tank and Butek slurry stores.

Whatever your slurry or digestate handling needs, Tramspread has the equipment, knowledge and experience to provide you with the right solution.

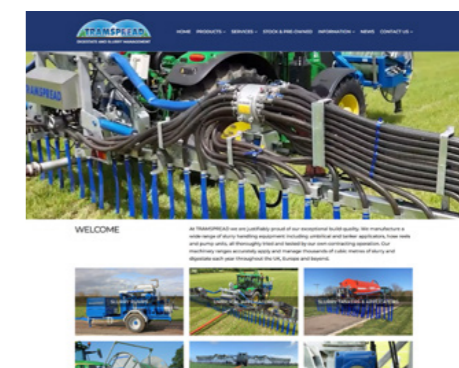


Welcome	2
Dribble bars	4
Engine driven pumps	8
PTO-driven pumps	12
Remote control systems	14
Umbilical and irrigation hose	16
Hose couplings	17
Hose handlers	18
Hose accessories	19
Hose reelers	20
Metering monitoring and mapping	22
Slurry storage	23
Hexa-Cover	26
Nurse tanks	27
Mixers	28
Separators	29
Service and contracting	30
Contacts	31



Discover our latest news, extra info and videos on our website:

[www.tramspread.co.uk](http://www.tramspread.co.uk)



# SUFFOLK DRIBBLE BARS

Tramspread offers a wide range of umbilical applicators, engineered for exceptional reliability and precision application. All models are galvanised and feature hydraulic folding for strength, durability and ease of transport. The front-mounted swinging arm is unique to Tramspread, permitting true 'U' turns, easier entry to and exit from headlands, while allowing full use of the tractor pick-up hitch.

Boom widths from 6 to 24 metres fold vertically and are equipped with automatic transport latches with safety locks. Units can be fitted to tankers, or tractors for umbilical application.



6m, 7m, 7.5m, 8m, 9m, & 12m SUFFOLK dribble bars



18-24m SUFFOLK dribble bars

## 6m, 7m, 7.5m, 8m, 9m, 10m, 10.5m and 12m SUFFOLK dribble bars



- Vogelsang ECQ or Alrena distributor/macerator
- Dribble outlets spaced 250mm apart (300mm on 12m model)
- Galvanised, heavy-duty construction
- Hydraulic vertical folding allowing access to tractor pick-up hitch
- Automatic transport safety latches with securing pins
- Designed to accept a flowmeter and manure sensor
- 3-point linkage with female A-frame
- Front-mounted 4" swinging arm permits U-turns
- Dribble bar easily removed from the umbilical frame for tanker mounting
- Purge outlet with spread nozzle (optional)

## TANKER APPLICATORS

All 6m to 12m SUFFOLK dribble bars can be tractor or tanker mounted.



## 12m, 15m, 16m and 18m twin macerator SUFFOLK dribble bars

- 2 x Vogelsang ECQ or Alrena distributors/macerators
- Dribble outlets spaced 250mm apart
- Left and right geometric control
- Full electro-hydraulic control via in-cab control box
- Galvanised, heavy-duty construction
- Hydraulic vertical folding allowing access to tractor pick-up hitch
- Auto transport safety latches with securing pins
- Designed to accept a flowmeter and manure sensor
- 3-point linkage with female A-frame
- Front-mounted 5" swinging arm permits U-turns
- Easily tanker-mounted via linkage
- Purge outlet with spread nozzle (optional)
- Valves to reduce spread width (optional)



## 18/24m vertical-folding twin macerator SUFFOLK dribble bars



- Folds down to 18m working width
- 2 x Vogelsang ECQ or Alrena distributors/macerators
- Dribble outlets spaced 300mm apart
- Left and right geometric control
- Full electro-hydraulic control via in-cab control box
- Galvanised, heavy-duty construction
- Break-back end sections
- Hydraulic vertical folding allowing access to tractor pick-up hitch
- Auto transport safety latches with securing pins
- Designed to accept a flowmeter and manure sensor
- Heavy-duty three-point linkage headstock
- Front-mounted 5" swinging arm permits U-turns
- Easily tanker-mounted via linkage
- Purge outlet with spread nozzle (optional)
- Valves to reduce spread width (optional)

Below: Ungalvanised prototype shown during extensive field-testing.



## 18/24m and 24m horizontal-folding twin macerator SUFFOLK dribble bars



- 18/24m version folds to 18m working width
- 2 x Vogelsang ECQ or Alrena distributors/macerators
- Dribble outlets spaced 300mm apart
- Aluminium booms with left and right geometric control
- Full electro-hydraulic control via in-cab control box
- Galvanised centre frame with parallelogram linkage allowing spread height control independent of tractor 3-point linkage
- Designed to accept a flowmeter and manure sensor
- 3-point linkage with female A-frame
- Front-mounted 5" swinging arm permits U-turns
- Built-in boom transport rests
- Transport position allows use of the tractor pick-up hitch and does not obstruct cab doors
- Purge outlet with spread nozzle (optional)
- Power-beyond hydraulics (optional)
- Valves to reduce spread width and/or shut off tramlines (optional)



## 12m SUFFOLK COMBINATION dribble bar

The Suffolk range 12m Combination dribble bar consists of a redesigned 12m dribble bar with the ability to carry a Tramsread 1000m random-wrap reeler. This makes it possible for the spreading tractor to carry a hose reeler in the front linkage and another on the rear of the dribble bar when travelling between fields or jobs. Clear access to the tractor pick-up hitch also allows a Tramsread engine driven pump unit to be towed at the same time.

While still incorporating Tramsread's premium build quality, the Combination dribble bar has a streamlined specification and is intended to offer a more cost-effective option where this type of machine is appropriate.

Typical specification includes:

- Ability to carry a Tramsread 1000m random-wrap reeler
- Twin Alrena or Vogelsang macerators
- Full electronic control via in-cab control box
- Galvanised construction with break-back end sections
- Vertical folding allowing access to tractor pick-up hitch
- Flowmeter and NIR sensor ready
- Heavy-duty three-point linkage headstock
- 5" front-mounted heavy-duty swinging arm permitting U-turns
- 48 outlets at 250mm spacings
- Purge outlet with spread nozzle (optional)
- Valves to reduce spread width and/or tramline outlet shut-offs (optional)



# ENGINE DRIVEN PUMP UNITS (EDPU)

Tramspread engine-driven pump units can be manufactured to individual requirements. Options include Bauer, Doda or Cri-Man pumps; radio or GSM remote control; pressure sensing; return-to-store pipework; flowmeters; sponge ball launchers; and painting in the customer's chosen colour.

Tramspread also offers a range of engine-driven pump unit options, including skid-mounted and trailed models, the latter available with or without a compressor. Fast-Tow units are ideal for increasing output when pumping over long distances. These units typically use up to 35% less fuel than a comparable tractor-driven pump unit, although PTO-driven pumps are also available as an alternative.



## Skid-mounted engine driven pump units



- 175hp six-cylinder F.P.T. engine with stainless steel exhaust
- Bauer Magnum SX2000 slurry pump
- 6" inlet and 4" outlet terminating with the customer's choice of coupling size/type
- Honda-driven Bauer priming unit
- 675-litre fuel tank base with integral fork-tine sockets
- Standard engine control panel (upgrades available, see below)
- Full LED work lights

Options:

- 238hp six-cylinder F.P.T. engine
- Doda HD35 or Cri-Man pump
- Tramspread GSM or SIL remote control and monitoring unit for one-person operation
- Smaller 500-litre side-mounted fuel tank and heavy-duty skid frame with fork-tine sockets in place of fuel tank base
- Manual 4/5" pig (sponge ball) launcher
- Remote-controlled 4/5" pig (sponge ball) launcher
- Additional remote-control options: 360-degree video camera, flowmeter, fuel-level sensor, compressor remote control, pressure sensing and nurse tank level sensor



## Trailed engine driven pump units

This outfit uses an engine and pump unit with a 500-litre fuel tank mounted on a heavy-duty chassis.

- 175hp six-cylinder F.P.T. engine with stainless steel exhaust
- Bauer Magnum SX2000 slurry pump
- 6" inlet and 4" outlet terminating with the customer's choice of coupling size/type
- Honda-driven Bauer priming unit
- 500-litre fuel tank
- Standard engine control panel (upgrades available, see below)
- Heavy-duty chassis with galvanised mudguards
- Hydraulic brakes
- Sprung axle with 355/60R18 tyres
- Road and work lights

Options:

- 238hp six-cylinder F.P.T. engine
- Doda HD35 or Cri-Man pump
- Suction hose transport kit
- Tramspread GSM or SIL remote control and monitoring unit for one-person operation
- Manual 4" or 5" pig (sponge ball) launcher
- Remote-controlled 4" or 5" pig (sponge ball) launcher
- Additional remote-control options: 360-degree video camera, flowmeter, fuel-level sensor, compressor remote control, pressure sensing and nurse tank level sensor



## Trailed engine driven pump unit with compressor

This is the most popular model in the Tramspread EDPU range. It combines our Trailed EDPU with a new or used compressor.

- 175hp six-cylinder F.P.T. engine with stainless steel exhaust
- Bauer Magnum SX2000 slurry pump
- 6" inlet and 4" outlet terminating with the customer's choice of coupling size/type
- Honda-driven Bauer priming unit
- 140, 180 or 260 CFM compressor
- 500-litre fuel tank
- Standard engine control panel (upgrades available, see below)
- Heavy-duty chassis with galvanised mudguards
- Sprung axle with hydraulic brakes and 355/60R18 tyres
- Road and work lights

Options:

- 238hp six-cylinder F.P.T. engine
- Doda HD35 or Cri-Man pump
- Suction hose transport kit
- Tramspread GSM or SIL remote control and monitoring unit for one-person operation
- Manual 4" or 5" pig (sponge ball) launcher
- Extended return-to-store pipework
- Remote-controlled 4" or 5" pig (sponge ball) launcher
- Additional remote-control options: 360-degree video camera, flowmeter, fuel-level sensor, compressor remote control, pressure sensing and nurse tank level sensor



## Contractor Trailer (twin-axle)



The purpose-built Contractor Trailer EDPU is designed with the operator in mind. The pump unit is mounted low down to allow easy connection of the suction and delivery hoses.

The front frame is designed to carry two Tramsread 1000m spools, which are easily loaded into cradles using a front-linkage-mounted hose reeler. They are secured with locking pins, requiring no straps, making loading quick, safe and efficient.

- 175hp six-cylinder F.P.T. engine with stainless steel exhaust
- Bauer Magnum SX2000 slurry pump
- 6" inlet and 4" outlet terminating with the customer's choice of coupling size/type
- Honda-driven Bauer priming unit
- 140, 180, 260 or 425 CFM compressor
- 900-litre fuel tank
- Work/load area with two large toolboxes
- Standard engine control panel (upgrades available, see below)
- Carrying capacity for 2000m of hose
- Air brakes
- Twin sprung high-speed axles with 435/50R19.5 tyres
- Road and work lights
- 9.1m long x 2.48m wide

Options:

- 238hp six-cylinder F.P.T. engine
- Doda HD35 or Cri-Man pump
- Suction hose transport kit
- Tramsread GSM or SIL remote control and monitoring unit for one-person operation
- Manual 4" or 5" pig (sponge ball) launcher
- Remote-controlled 4" or 5" pig (sponge ball) launcher
- Additional remote-control options: 360-degree video camera, flowmeter, fuel-level sensor, compressor remote control, pressure sensing and nurse tank level sensor



## Contractor Trailer (single-axle)

A more compact single-axle version of the popular Contractor Trailer engine driven pump unit, combining the same capability and performance with reduced dimensions for easier navigation through narrow or uneven gateways and awkward yards.

The 900-litre fuel tank has been repositioned beneath the engine and pump and, as always, considerable thought has been given to operator convenience, with suction and delivery hose connections positioned at low level. The 1000m hose spool is loaded into its cradle from the front and quickly secured with pins – no straps required. Generous toolboxes provide ample storage. The drawbar is configured to allow the towing tractor to carry a dribble bar in the linkage, enabling one operator to move an entire umbilical system.

- 175hp six-cylinder F.P.T. engine with stainless steel exhaust
- Bauer Magnum SX2000 slurry pump
- 6" inlet and 4" outlet terminating with the customer's choice of coupling size/type
- Honda-driven Bauer priming unit
- 140 or 180 CFM compressor
- 900-litre fuel tank
- Two large toolboxes
- Standard engine control panel (upgrades available, see below)
- Carrying capacity for 1000m of hose
- Air brakes
- Sprung high-speed axle with 435/50R19.5 tyres
- Road and work lights
- 6.3m long x 2.48m wide

Options:

- 238hp six-cylinder F.P.T. engine
- Doda HD35 or Cri-Man pump
- Suction hose transport kit
- Tramsread GSM or SIL remote control and monitoring unit for one-person operation
- Manual 4" or 5" pig (sponge ball) launcher
- Remote-controlled 4" or 5" pig (sponge ball) launcher
- Additional remote-control options: 360-degree video camera, flowmeter, fuel-level sensor, compressor remote control, pressure sensing and nurse tank level sensor



## Fast-Tow engine driven pump units

Using the same proven engine and pump combination as our other engine-driven pump units, this model is mounted on a Knott-Avonride 3500kg galvanised twin-axle chassis. It is ideal for users requiring a boost pump or a fast-response unit when travelling over longer distances.



- 175hp six-cylinder F.P.T. engine with stainless steel exhaust
- Bauer Magnum SX2000 slurry pump
- 6" inlet and 4" outlet terminating with the customer's choice of coupling size/type
- Honda-driven Bauer priming unit
- 200-litre fuel tank (to keep weight within the 3500kg limit)
- Standard engine control panel (upgrades available, see below)
- Galvanised chassis with mudguards
- Overrun brakes and 50mm lockable ball hitch
- Twin high-speed axles (96kph/60mph) with 185/80R14 tyres
- Complete with rear jacks and a spare wheel
- Road and work lights

Options:

- 238hp six-cylinder F.P.T. engine
- Doda HD35 or Cri-Man pump
- Tramsread GSM or SIL remote control and monitoring unit for one-person operation
- Manual 4" or 5" pig (sponge ball) launcher
- Remote-controlled 4 or 5" pig (sponge ball) launcher
- Additional remote-control options: 360-degree video camera, flowmeter, fuel-level sensor, compressor remote control, pressure sensing and nurse tank level sensor



## PTO DRIVEN PUMPS

### Doda L35 HD 1:2.73



The Doda L35 HD 1:2.73 tractor-driven slurry pump is suitable for farmers and contractors requiring a high-performance pump to supply today's longer umbilical systems. It has a minimum power requirement of 155hp and is supplied with a hydraulic primer, 6" inlet and 4" delivery pipework with gate valve and compressor coupling, plus return-to-store and sponge ball launcher incorporating two hydraulic sluice valves. A PTO shaft is supplied.

- Capacity of up to 350m<sup>3</sup>/hour
- Manometric head of up to 170m
- High cutting performance
- Easy maintenance
- PTO input: 1000rpm
- Choice of three pipework arrangements: Tramsread delivery pipework, return-to-store (also capable of launching a 4-5" sponge), or return-to-store plus sponge ball launcher (suitable for 5-6" ball)



## Bauer Magnum SX1000

The Bauer Magnum SX1000 tractor-driven slurry pump is suitable for farmers and contractors requiring a high-performance slurry pump capable of supplying today's longer umbilical systems. The minimum power requirement is 150hp. It is supplied on a heavy-duty three-point linkage frame, usually complete with hydraulic primer, 6" suction inlet and 4" delivery pipework with gate valve and compressor coupling, plus optional return-to-store and sponge ball launcher incorporating two hydraulic sluice valves. A PTO shaft is supplied.

- Easily handles up to 12% solids
- Capacity of up to 300m<sup>3</sup>/hour
- Manometric head of up to 140m
- High cutting performance
- Engineered for long service life
- Efficient and economical operation
- Low operating costs and easy maintenance
- PTO input: 1000rpm
- Self-primer (optional equipment)
- Choice of three pipework arrangements: Tramsread delivery pipework, return-to-store (also capable of launching a 4-5" sponge), or return-to-store plus sponge ball launcher (suitable for 5-6" ball)

Magnum slurry pumps are designed with a special chopper on the suction side, ensuring trouble-free operation even when the slurry contains solids such as straw, fibrous material, clots or sludge of up to 12%.



## Bauer Magnum SM540

The SM540 tractor-driven slurry pump is a cost-effective option, ideally suited to transfer work and smaller umbilical systems. It shares many of the same characteristics as the SX1000, but with lower output and power requirement, while retaining the same engineering quality.

For more information on Bauer pumps, please contact us.



# REMOTE CONTROL SYSTEMS

Tramspread was an early pioneer of remote-control systems for engine-driven pumps, making it possible for an entire umbilical system to be operated and monitored by a single operator. As well as reducing labour requirements, these systems allow the pump to be controlled at the push of a button from the cab of the applicator tractor and, when coupled with inlet and outlet pressure sensors and flowmeters, can warn of potential issues such as drag-hose leaks. When fitted with an optional 360-degree video camera, the tractor driver can also monitor the slurry store and surrounding area from the seat.

## SIL Vision IV radio remote control system



Tramspread tests the radio signal to 3000m, and an optional self-contained signal repeater can be placed in an appropriate location to extend the radio signal by a further 3000m.

- Electric throttle control
- Engine start/stop
- Inlet pressure sensor
- Outlet pressure sensor
- Compressor start/stop
- Flowmeter connection
- Recording of spread/mix hours
- Recording of applied slurry volume
- Divert valve
- LCD in-cab display
- Target engine speed
- Actual engine speed
- Divert status
- Pressure
- Flow
- Compressor pressure
- Fuel-level sensing
- Engine protection
- Low oil pressure
- High coolant temperature
- Low coolant level

Remote-control options:

- Air compressor control
- Sponge ball (pig) launcher
- 360-degree video camera
- Transfer mode (monitored unmanned slurry transfer)
- Nurse tank level sensor



## Teletram 2020 GSM remote control system

With GSM communication, distance is not an issue. The system operates using the 3G, 4G or 5G mobile network.

- Full remote control via built-in GSM 3G/4G/5G modem
- Industrial-grade instrumentation – IO-Link data connections
- High-level security via Android or Apple device
- Communication not affected by distance
- Engine start/stop, throttle and divert
- Inlet pressure sensor
- Outlet pressure sensor
- Flowmeter connection
- Recording of spread/mix hours
- Recording of slurry volume applied
- Divert valve
- Android tablet in-cab display
- Target engine speed
- Actual engine speed
- Divert status
- Pressure
- Flow
- Compressor pressure
- Fuel-level sensing
- Engine protection
- Low oil pressure
- High coolant temperature
- Low coolant level

Remote-control options:

- 360-degree video camera
- Air compressor control (including pressure sensing)
- Sponge ball (pig) launcher
- Transfer mode (monitored unmanned slurry transfer)
- Nurse tank level sensor



# UMBILICAL AND IRRIGATION HOSE

After many years of applying slurry with Tramsread umbilical equipment and operating with various makes of polyurethane and nitrile rubber drag hose, Tramsread confidently recommends **Gollmer & Hummel** and **Mandals** hose. We stock both polyurethane (PU) and nitrile rubber (NR) layflat drag hose in a range of sizes.



## Gollmer & Hummel



Tramsread has been importing Gollmer & Hummel hose from Germany for over 20 years and is the largest supplier in the UK and Europe. The company has been manufacturing hose since 1872 and produces a wide range of high-quality polyurethane (PU) and nitrile rubber (NR) hoses suitable for slurry application and irrigation water. Its world-class layflat hose is tough and durable, making it the ideal choice for both drag-hose systems and irrigation. Tramsread keeps a large range of sizes in stock in the UK for immediate availability.

RIB PU blue ribbed drag hose is the latest addition to Tramsread's G&H range. Constructed using a polyurethane through-the-weave extrusion process, the fabric is fully embedded within the polyurethane for optimal damage protection. It features high tensile strength and flexibility, minimal elongation under pressure, excellent abrasion resistance, and is equally well suited to irrigation systems.



## Mandals



Norwegian manufacturer Mandals is another world-class producer of layflat hose. The company has a long history and has been manufacturing hose since 1775. Mandals pioneered the development of layflat hose and developed its first circular loom in 1935. The company manufactures polyurethane (PU) and nitrile rubber (NR) hose in a range of sizes suitable for drag hose systems and irrigation.

The Mandals Dragman series of flexible, high-quality layflat hoses is uniquely designed for the agricultural industry. It is particularly well suited to umbilical systems, offering high abrasion and kink resistance, excellent adhesion and tensile strength, high stability, and long service life with low maintenance requirements.



# HOSE COUPLINGS



## Bauer

Bauer couplings provide a quick and straightforward solution to joining multiple lengths of hose together. These couplings are primarily used in the agricultural, construction and water-processing industries to convey a wide range of fluids, including chemicals, sewage, slurry and water. To make a connection, the male Bauer coupling is placed into the female and is then secured using a lever-locking ring, allowing fast and simple hose assembly.

To find out more about our full range of Bauer couplings, please contact us.



## Storz

Storz couplings have an identical locking head with no separate male or female halves. The locking head comprises two lugs and can be supplied with with serrated hose tails, female BSPP threads, male BSPP threads or blanking caps on the reverse side. These couplings have a maximum working pressure of 16 bar (232 psi) and are available in a range of materials, including aluminium alloy, brass or stainless steel.

Storz couplings are connected using an identically sized fitting with the same lug dimension (sometimes referred to as the Ka distance in millimetres). Because Storz couplings are strong, compact and non-sexed, they complement the random-wrap hose reel design.

Tramsread supplies premium-quality Storz couplings made in Germany by Feuer-Vogel. For information on our full range, please contact us.



## Shug

Metal 360 couplings, manufactured in Canada, are very strong and durable and are particularly well suited to larger hose sizes used in long-distance drag-hose pumping systems. They are non-sexed, and all sizes are interconnectable without needing adaptors.

Tramsread can supply the full Metal 360 range, with good stock levels held in the UK. For more information, please contact us.



## WAGTAIL hose humper

The Tramsread 'Wagtail' hose humper pivots both left and right, enabling more accurate hose placement outside tramlines, which reduces pipe wear. The mechanism also minimises crop damage during spreading, as the operator does not have to leave the tramlines when moving the hose. The ability to move the hose to either side of the tractor also helps the operator avoid obstacles more easily and position the hose accurately.

The hydraulic offset and raising of the wheel into the transport position are controlled from the tractor's spool valve. When raised, it also leaves the tractor pick-up hitch available for other implements, such as a trailed hose reeler or pump trailer. A braking mechanism allows the wheel to spin freely or be locked in position. By choosing to use the Wagtail, operators can reduce stress on pipe and couplings, lowering the risk of leaks and spills.



## Hose humper



The standard Tramsread hose humper is a fixed version of the Wagtail. It works in much the same way but does not have the ability to place the drag hose outside the tramline without running down a small amount of crop. As such, it lacks some of the flexibility of the Wagtail and is mainly best suited for use on grass or open land.

Raising the wheel into the transport position is controlled from the tractor's spool valve. When raised, it also leaves the tractor pick-up hitch available for other implements, such as a trailed hose reeler or pump trailer. A braking mechanism allows the wheel to spin freely or be locked in position.

## COW HORN (drag loop)



The Drag Loop, or 'Cow Horn' as it is affectionately known, is primarily used when applying slurry to combinable crops with an umbilical system working in the tramlines. It is used to pull the supply hose across the field at 90 degrees to the tramlines, moving the hose forward ahead of the applicator to stop the hose from twisting.

It is available in 4" and 5" diameters with Bauer, Storz or Metal 360 couplings. The Cow Horn system is very easy to use, does not require a high-powered tractor and does not need to be constantly moved or manned. The 3-point linkage frame is light, durable and long-lasting, making it a cost-effective addition to an umbilical spreading system.

## Hose pinchers

Tramsread offers the slurry hose pincher to help reduce the risk of slurry spillages. It is designed for use with pressurised hoses up to 8" in diameter, to stem the flow. It can be used to prevent slurry loss when breaking couplings or carrying out hose repairs in the field.

Designed for use with umbilical slurry hose, the pincher can also be used in other agricultural applications such as irrigation and any other liquid-carrying hose on-farm.



## Hose crossing ramps

These modular hose pipe ramps combine strong natural and synthetic rubbers and galvanised steel sections to create multi-channel installations offering excellent protection. The ramps also feature a ribbed top surface to improve vehicle traction.

These crossing ramps are suitable for roads, fields and any areas requiring protection from vehicle traffic. They are easy to transport and can be laid out quickly and efficiently.



## Gas monitor

The dangers of working with slurry are well documented. When agitated or pumped, high concentrations of gases are released very quickly, the most dangerous of which is hydrogen sulphide. At high concentrations, it deadens the sense of smell, causing difficulty breathing and disorientation. After only a few breaths, collapse and death can occur.

Simply press the START/TEST button and the slurry gas detector is ready to use, providing two years of continuous, maintenance-free operation from the day of activation. The housing includes an integral, concussion-proof boot and a heavy-duty stainless steel alligator-style belt clip. A large, easy-to-read LCD displays detector life remaining, two alarm set points and peak exposure levels. Clip it to your lapel, pocket or belt for reliable, cost-effective protection.



# HOSE REELERS

Tramspread hose reelers have been developed to meet the demanding requirements of professional agricultural contractors and progressive farmers. We offer both mounted and trailed models, all designed to be heavy-duty, durable and easy to operate.



## Mounted random wrap reelers



Tramspread mounted 600m, 1000m and 1400m random-wrap hose reelers are designed for use with front and rear tractor 3-point linkages.

The 600m version has a galvanised detachable spool which is quickly and easily removed from the heavy-duty 3-point linkage frame by removing two securing pins, lowering the spool to the ground and driving away. Using this system, one frame can serve several spools. The spool is rotated by a heavy-duty hydraulic motor and gear drive for positive, controlled recovery and laying out of the hose without overrun. A large central trough in the spool allows easy location of the drag hose couplings. A single large toolbox is also provided.

The 1000m and 1400m versions have strengthened galvanised detachable spools with top drive gears. The heavy-duty 3-point linkage frame is reinforced, and twin hydraulic motors provide additional hose recovery power, allowing longer lengths of drag hose to be reeled in. Twin toolboxes, one on each side, provide useful storage.

The 1000m spool comfortably holds 1000m of 4" or 5" drag hose and 600m of 6" hose, or a mixture of hoses when using the easily attached partitions. The 1400m spool comfortably holds 1400m of 4" or 5" drag hose, or 1200m of 6" hose.

Options:

- 1000m and 1400m extra heavy-duty galvanised spool
- Galvanised protection bar and light bar (1000m and 1400m models)
- Full lighting kit: head, side and indicator lights, plus LED work lights
- Galvanised retrofit spool partitions



## Trailed hose reelers

Tramspread trailed hose reelers are built on a heavy-duty chassis with a drawbar designed to allow an applicator to be mounted on the tractor's linkage while the hose reel is towed with the pick-up hitch.

### 2000m Trailed Segmented Hose Reeler

- Five 400m galvanised segments
- 2000m hose capacity
- Twin hydraulic motors
- Hydraulically operated from tractor and reeler
- Full-width roller and guide bobbin
- Hydraulic brakes
- Road lights
- Mudguards
- Sprung 40kph axle
- Wheels and tyres: 500/60-22.5
- Heavy-duty chassis with long drawbar



### 2000m Trailed Random Wrap Hose Reeler

- Galvanised heavy-duty random-wrap spool
- 2000m x 6" hose capacity
- 2400m x 5" hose capacity
- 2800m x 4" hose capacity
- Hydraulic pivoting drawbar
- Twin hydraulic motors
- Hydraulically operated from tractor and reeler
- Large toolbox
- Hydraulic brakes
- Road lights
- Mudguards
- Sprung 40kph axle
- Wheels and tyres: 500/60-22.5



## Trailed Fast-Tow hose reeler

### 96kph/60mph Trailed Fast-Tow Reeler

- Detachable galvanised spool
- Interchangeable spools for various hose sizes
- Operated via hydraulic power pack
- Galvanised chassis
- Twin high-speed axles
- Stabilisers
- Braked coupling with 50mm lockable ball hitch
- Full UK road lighting



# METERING MONITORING & MAPPING

Slurry is often considered a problem by many farmers. However, when managed effectively it becomes a valuable, cost-effective natural fertiliser that can significantly reduce reliance on expensive inputs. Accurate flow metering, application monitoring and nutrient analysis are all essential parts of the process, ensuring slurry is applied precisely and its full value is realised by the crop.



## Flow Meter

The Krohne Optiflux is the first step in accurate flow monitoring. It can be fitted in the pipeline either close to the pump or on the applicator. It features two resettable totalisers and displays the flow rate, usually in cubic metres per hour.

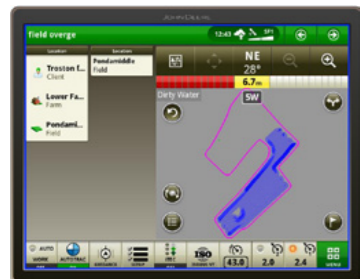
## Slurry Monitors

We can offer various options to monitor slurry flow through a flow meter:

A simple, cost-effective entry-level in-cab slurry monitor that displays actual flow rate and total volume applied.

A mid-range monitor aimed at contractors, capable of storing individual customer details. It displays flow rate (cubic metres per hour), application rate, forward speed, area covered, and the time and date of application. It is supported by software that enables easy downloading of application data.

**Tramspread ISOBUS Slurry Monitor** – the top-of-the-range option enables the flow meter to be connected to the tractor's ISOBUS system, allowing the operator to read and download information directly from the tractor screen. When GPS is fitted to the tractor, full field mapping showing application and slurry coverage can be stored on a memory stick and downloaded to the office computer.



## Slurry Testing Kit

The Agros Nova liquid manure testing kit offers laboratory-quality results. The nutrient value of the slurry, in conjunction with flow rate and forward speed, can be used to determine the amount of nitrogen applied per hectare. It also measures dry matter and phosphorus. The kit is quick and easy to use and provides accurate results with both dry and wet slurry samples.

The test takes approximately five minutes, with results presented in an easily understood format. Each kit contains sufficient chemicals for between 30 and 50 tests, and replacement chemicals are available at reasonable cost. All equipment is supplied in a strong carry case with full instructions.



# SLURRY STORAGE

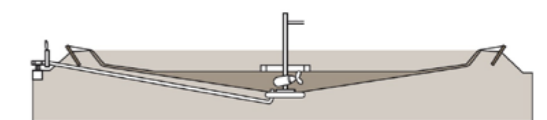


## Alligator Bagtanks

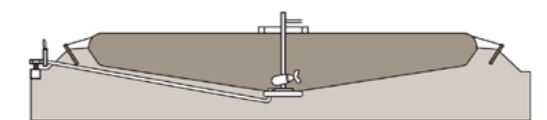
Dutch company Albers Alligator has been manufacturing bag tanks for over 35 years. Tramspread has been the sole UK importer for these high-quality products for more than 20 years. Our highly skilled team has extensive experience in providing expert advice and delivering durable, long-lasting installations.

These tanks offer a cost-effective and flexible solution for slurry storage, suitable for both small and large volumes. Bagtanks are available in capacities ranging from 200m<sup>3</sup> to 7,000m<sup>3</sup> and can be installed on virtually any soil type, requiring only a shallow foundation. The tanks have integral hydraulic or electric stirrers, fill/empty pipes and are self-venting so relatively little management is needed. You only remove what you put in—no added rainwater, just nutrient-rich slurry.

- Partially recessed below ground
- Suitable for a weak subsoil
- Fully sealed construction
- Can be fitted with mixers
- Made from polyester fabric with high-grade plastic coating
- Resistant to many kinds of fluid and UV radiation



Cross-section of empty Alligator Bagtank.



Cross-section of full Alligator Bagtank.



## Alligator L-Tanks

Alligator L-Tanks offer flexible storage for slurry, digestate and other liquids in sizes of up to 2000m<sup>3</sup>. These simple free-standing temporary stores are rectangular bag-type tanks, essentially resembling a 'big pillow'. Although completely above ground their low profile means there is very little impact on the landscape. They are constructed from a long-life UV resistant material. Rigid PVC straps reinforce each corner, and de-aeration point(s) are located on top of the tank.

Possible extras:

- Protection felt
- Valves/connections in almost any size
- Material suitable for drinking water



## Butek tanks

## BUTEK Tanks



Butek temporary slurry stores are made in Britain and have capacities of 280m<sup>3</sup>, 500m<sup>3</sup>, 800m<sup>3</sup>, 1100m<sup>3</sup> and 1250m<sup>3</sup>. They are quick to install and consist of a steel tank with a durable Landflex Elvaloy lining suitable for slurry.

The steel is treated with Magnelis, a metallic zinc coating said to last three times as long as standard galvanised steel, and then powder-coated for a durable maintenance-free finish. Tanks can be supplied in any RAL colour, although dark green is standard, and have a 10-year warranty (coastal area exclusions apply) with a longer anticipated lifespan than galvanised steel tanks.

As standard tanks are equipped with a single 6" through-the-wall filling/emptying port, but they can be specified with as many ports as required, including 5" up-and-over the wall types. Multiple ports allow an umbilical slurry application system to operate, simultaneously drawing-out slurry whilst recirculating back into the tank.

Installation is straightforward, without any need to pour a concrete base. Instead, the tank uses a compacted earth base covered with a Geotech membrane and a ring of concrete slabs which are supplied as part of the package along with drawings and installation advice.

To minimise odour and emissions the tanks can be covered with either a floating Hexa-Cover or a fixed cover. The slurry or digestate can be mixed using a hydraulically-driven mixer positioned over the side or agitated using a pump.



## Winbag nurse bags

## Albers Alligator specialist in flexible constructions



Albers Alligator manufactures Winbag, a portable bag tank. These smaller bag tanks range from 100m<sup>3</sup> to 350m<sup>3</sup> and are typically used as overflow storage but can be used as a temporary and portable solution requiring only a level, smooth site. A reeling device called Winsystem rolls the whole bag on to a trailer and will unreel it in another location.

The ability to take these bags almost anywhere on the farm, unreel and fill, offers a solution for difficult to reach fields. The bags can be remotely situated, tanker filled, or pumped to, and emptied when the slurry is needed.

- Portable nurse bag
- Easily reeled in/out and moved
- Can be used on almost any level surface
- Flexible and affordable storage
- Fully-sealed one-piece storage
- Almost any ports/valves available on request



## Nurse tanks

Tramsread offers a range of nurse tanks with noteworthy features and holding capacities of 45m<sup>3</sup>, 55m<sup>3</sup>, 70m<sup>3</sup> and 90m<sup>3</sup>.

The tanks use an individual hydraulic lift-and-lower axle design, featuring hydraulic suspension and full air braking, with the wheels recessed into each side leaving a clear central section which never blocks. This makes it far easier to position and use the tank, knowing it can be emptied from either the front or the back.

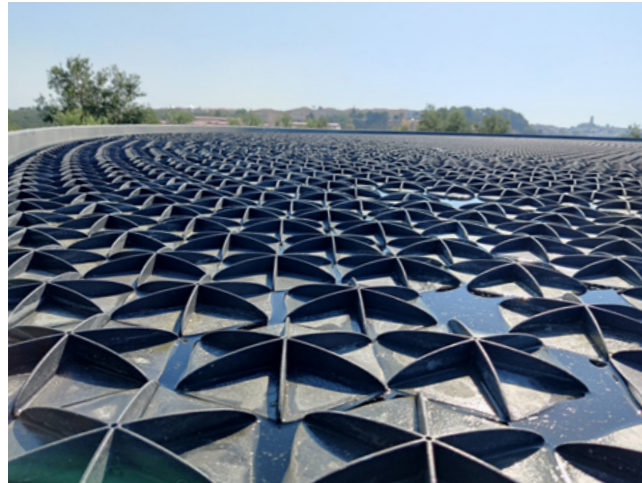
All models use a hydraulically-pivoting drawbar which is especially handy when negotiating awkward uneven gateways or positioning the tank in undulating terrain. Generous ground clearance is provided, and the running gear consists of 10-stud wheels with 385/65R22.5 tyres and air brakes (560/45R22.5 and 560/60R22.5 options).

Standard specification includes a substantial plexiglass sight gauge, internal and external aluminium access ladders, LED lights and beacon, and reflectors. Virtually any combination and type of inlet and outlet ports can be specified, including up and over pipes and a docking funnel for suction arms. As standard the tanks are supplied with one 6" or 8" blind flange but virtually any combination of inlet and outlet ports can be specified. Other options include a sump recess, and most customer requirements can be accommodated.



## Hexa-Cover

# HEXA-COVER®

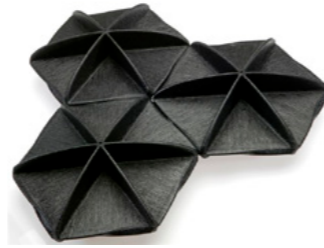


Hexa-Cover® is comprised of recycled polypropylene segments which float to create a flexible cover. The hexagonal pieces fit together and offer an effective way to significantly reduce emissions and provide a cost-effective solution to slurry storage requirements.

Hexa-Cover is an innovative and adaptable product that can cover any slurry tank or lagoon and prevents 95% of harmful emissions from being released. Made of recycled polypropylene, Hexa-Cover pieces float on top of any liquid, fit together to fill the space, block light out and gas in, whilst also helping to prevent a crust forming. The product is heat, frost, and wind proof, with a life expectancy of 25 years.

Hexa-Cover offers:

- Life expectancy of 25 years
- Favourable price
- No running cost
- No repair cost
- No maintenance cost
- Up to 99.9% coverage of the surface
- Up to 95% reduction of evaporation from water surfaces
- Up to 95% stable and constant reduction of emission (i.e. ammonia)
- Up to 90% stable and constant reduction of odours
- Noticeable reduction in organic growth such as algae, weeds etc.
- Unaffected by rain, snow, and frost



A lagoon covered with Hexa-Cover can be mixed in the usual manner – the Hexa-Cover sections naturally float, so they quickly settle out again after being disturbed, and because they're not hollow even if slightly damaged they won't fill with slurry and sink.



## Agri-Tank



The Agri-Tank concrete store is designed to meet all your slurry and digestate storage requirements. It is available in capacities from 200m<sup>3</sup> up to 7,000m<sup>3</sup> with a design life of 50 years. Filling and emptying pipes and valves can be designed to your requirements, alongside other options which include mixers, gantries and an Agri-Cover roof.



## Alligator lagoon liners

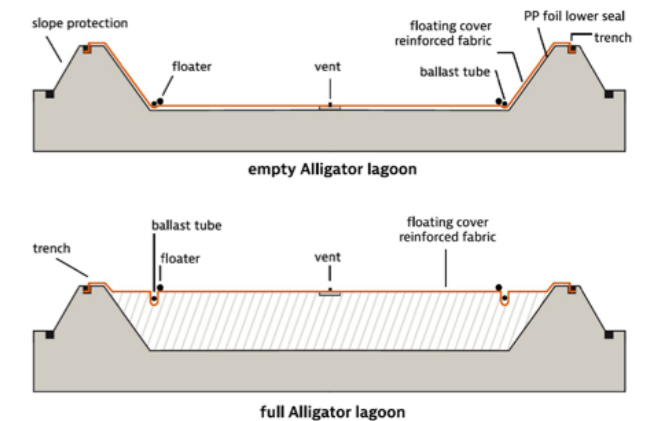
Albers Alligator has over 40 years of experience with slurry lagoons. It applies the same considerable degree of expertise and high standards used for its bag tanks to its lagoon liners. The Alligator slurry lagoon uses a PP foil which is resistant to many liquid types and the effects of UV radiation, ensuring a long service life. The design and installation are part of the package.

- No costly foundations required
- Suitable for all kinds of mixed slurry/digestate
- Available in sizes of up to 10,000m<sup>3</sup>
- Affordable solution for slurry storage

As standard the Alligator lagoon comes complete with:

- Suction/filling pipe and valves
- Air vents
- Inspection/mixer opening
- Slope protection

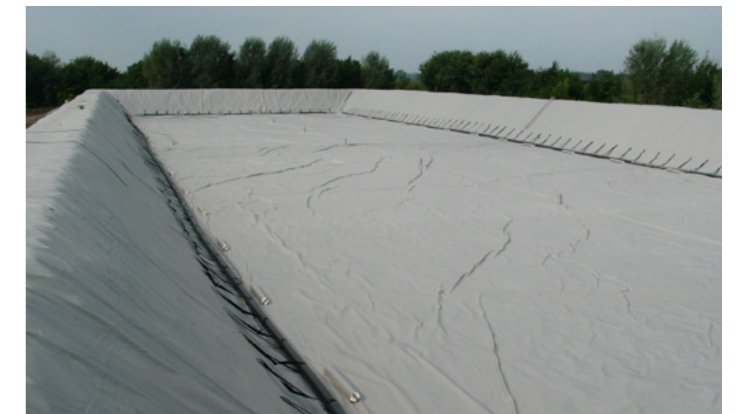
As an option the lagoon can be covered by a floating cover made from a special fabric, which remains tensioned, or Hexa-Cover floating elements.



## Alligator floating covers

Albers Alligator lagoons can be fitted with an optional floating cover made from a special dual-side coated fabric developed especially for use with slurry. It remains taut across the surface and can accommodate vents.

- Well proven over 35 years
- Suitable for covering many types of liquids
- Can prevent algae growth and reduce odours
- Ideal for covering irrigation basins (minimising evaporation)
- Can be suitable for drinking water



# MIXERS

Mixing slurry regularly helps to keep it liquid and prevent crusts and dry matter forming, making the slurry easier to pump and the nutrients more consistent when it is applied to the crop. Tramspread has imported Reck and Stallkamp machinery from Germany since 2012 and is the sole UK distributor for both manufacturers, which produce mixers of the highest quality with engineering that is built to last. Our team of advisers is on hand to help understand your farm and discuss the options with you.

## Reck mixers



The Reck Typhoon Rigid PTO-driven mixer range for working in lagoons is popular in the UK. It is available in lengths from 4.4m to 11.3m. The reinforced Jumbo version is suitable for tractors up to 260hp. A range of propeller sizes and options is available.

The Mammoth PTO-driven tower mixer is a highly capable machine for working over the side of above-ground stores up to 6m in height. The mixer, with reaches from 6m to 9m, can be offered with a 270-degree swivel and operator platform options.

The Reck Tornado for use with a telehandler or loader is driven hydraulically, making it ideal for mixing above-ground slurry stores but is also suitable for lagoons.



## Reck electric mixers



Electric mixers for slatted floor livestock buildings include the Porco, for pig housing, and the Torro, for cow sheds. Both are lightweight, portable and easy to use units. They can be inserted through gaps between slats down to 17mm, so large access points aren't required, making it easy and convenient to mix otherwise hard to access slurry.

Reck also offers the Blizzard electric mixer, which either attaches to the side of a slurry store or to a wheeled frame. Models from 5.5kW to 22kW are offered with reaches from 4m to 9m.



## Stallkamp submersible mixers



Stallkamp manufactures a range of submersible slurry mixers. The TMR range covers all slurry types and includes the TMR3, TMR 3S, TMR3D, TMR3-Z, TMR3D-Z, TMR3M and the TMR 3i. Fitted with powerful three-phase motors, the mixer propellers run at a rotational speed of up to 373 rpm and have a compact design suitable for most slurry stores.



# SEPARATORS

Tramspread has imported high-quality Stallkamp slurry separators from Germany since 2012 and keeps a range of parts for these machines in stock.

Two basic ranges are offered: the PSS and PSG. Both are screw-type separators, which use an armoured auger to press the material against a fine screen, the liquid passing through whilst the solid continues its passage through the machine to be ejected, with the screen constantly cleaned by the screw. Dry matter content of the finished solid is controlled by adjusting the counter pressure at the discharge end. This results in quicker operation, since a plug doesn't have to be built up from the material being separated. Both ranges are offered as standalone fixed machines or as mobile units either free-standing or trailer-mounted.

All are suitable for use with pig and cow slurry, separating digestate produced by AD plants, and also for industrial applications such as dealing with food waste and distillery mash. Other options include an integrated chopping system to protect the pumps when dealing with more variable slurry. Tramspread also supplies pumps, gantries and control panels to suit individual system requirements to complete the package.

## Stallkamp

### PSS 4-500 and 5.5-500

These are larger higher performance separators of the same basic design, featuring most features of the above model. With a stainless-steel press screw with tungsten carbide plating and a 4.0 or 5.5kW drive motor. The hydraulically pressurised ball-head can be easily pivoted for maintenance making it particularly user friendly.

Mobile units are available with the option of rotary lobe supply and discharge pumps, a 0.85m<sup>3</sup> feed hopper and a 0.85m<sup>3</sup> liquid tank.



## Stallkamp separators

### PSG 4-600, 5.5-600 and 5.5-750

A heavier-duty machine with a cast iron housing, reversible stainless-steel press screw and stainless-steel solids outlet with sleeplessly adjustable flaps to control dry matter content. The screen diameter is 254mm, with a length of 600 or 750mm depending on the model. The PSG series offers higher throughput, simple control and low energy consumption. Motors of 4.0 or 5.5kW are used.

A mobile unit consisting of a PSG 5.5-600 with a 5.5kW drive motor, progressive cavity pumps for supply and removal, feed hopper, reception tank and control panel is also offered.



## Stallkamp

The Stallkamp pump portfolio includes submersible slurry pumps, rotary lobe pumps, long shaft centrifugal pumps and eccentric screw pumps. As well as being well suited as slurry pumps, they are often used in AD plants and wastewater treatment plants. Please contact us for more detailed information on the vast range of solutions available.



## Stallkamp pumps

## Parts and services



Tramspread offers a wide variety of services to help farmers and contractors with slurry and digestate application. Over three decades of contracting experience and close links with OEMs mean we always have a wide variety of machinery and equipment available to hire.

If you are in need, we hold stock and can source a wide variety of useful equipment and spare parts. Please find the model or part number that you require, and one of our team will do their best to find you what you need.

**For parts please contact:**  
Josh Coughtrey: 01449 766133

## Contracting

Sister company Tramspread Contracting Ltd operates six Tramspread umbilical systems, applying in excess of 500,000m<sup>3</sup> of slurry and digestate for customers throughout East Anglia and beyond. Of this, approximately 75% is applied in the spring as a top dressing to growing crops.

The company is equipped with the latest and best slurry equipment sourced from Tramspread including dribble bars, hose reelers, pump units, nurse bags and tanks, mixers, and a whole host of ancillary items. Additionally, the contracting operation is also called on to thoroughly field-test new Tramspread developments, ensuring that all products are ready for the end user when they go into production.

Hire is also an important part of the business, including machinery such as pumps and mixers and over 45,000m of hose which is well suited for irrigation use. The company's reliable fleet can help with any job, large or small. Please get in contact for more information.

**Tramspread Contracting Ltd**  
Larry Baker: 07823 402815



## Contact Us

### UK AREA SALES MANAGERS



Sion Williams  
07717 576625  
sion@tramspread.co.uk



John Tydeman  
07730 438469  
john@tramspread.co.uk



Wayne Middleton  
07747 780444  
wayne@tramspread.co.uk

### CONTACT US

Tramspread Agri Ltd  
Buces Farm  
Mendlesham  
Suffolk  
IP14 5NR  
United Kingdom

Email: info@tramspread.co.uk  
Tel: +44 (0)1449 766133

### MANAGING DIRECTOR & INTERNATIONAL SALES



James Peachey  
07884 869034  
james@tramspread.co.uk



## International dealers



WBI – France  
+33 6 50 53 91 23  
wbi.informations@gmail.com  
www.wbi-import.com



ATG GmbH – Switzerland  
+41 41 980 62 43  
info@agro-tec.ch  
www.agro-tec.ch



APK-INVEST – Ukraine  
+38 (056) 736 21 65  
office@apk-invest.com.ua  
www.apk-invest.com.ua



Etxe Holz S.L. – Spain  
+34 948 98 33 90  
luis@etxeholz.com  
www.etxeholz.net



Nevada – New Zealand  
+64 800 464 393  
sales@nevadagroup.co.nz  
www.nevadagroup.co.nz



McLaren Agricultural Machinery – Australia  
+61 455 833 118  
sales@mclarenag.com.au  
www.mclarenag.com.au



Stallkamp (Beijing) Technology Ltd – China  
+86 10 82478099  
stallkamp@163.com



+44 (0)1449 766133 | [info@tramsread.co.uk](mailto:info@tramsread.co.uk) | [www.tramsread.co.uk](http://www.tramsread.co.uk)